

32B-2 WIDE PURETIC POWERBLOCK



32B - 2 W Powerblock

The addition of a sheave spacer makes this our largest capacity Powerblock. Holds 42 inches of compact net circumference.

Hydraulic Motor:

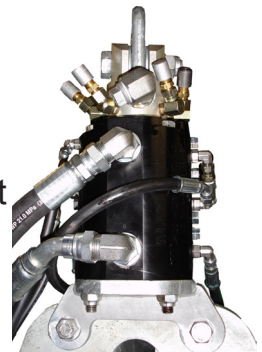
32B Wide Powerblock is available with 2 different sizes of 2 speed motors. Haul at high speed or maximum torque.

All hydraulic motors are now marinized for longer service life.

Powergrip:

The yoke mounted Powergrip helps keep the net square when hauling, increasing traction and control of the net in rough weather.

Powergrip tire assemblies have galvanized rims for long service life in a saltwater environment and are available in a number of different styles, heights and widths to customize the grip based on your net size and fishery.



Hydraulic Swivel:

Rotate your powerblock 360 degrees. The load bearing hydraulic swivel option allows the powerblock to easily haul port or starboard without binding the hydraulic hoses.

PowerTilt Option:

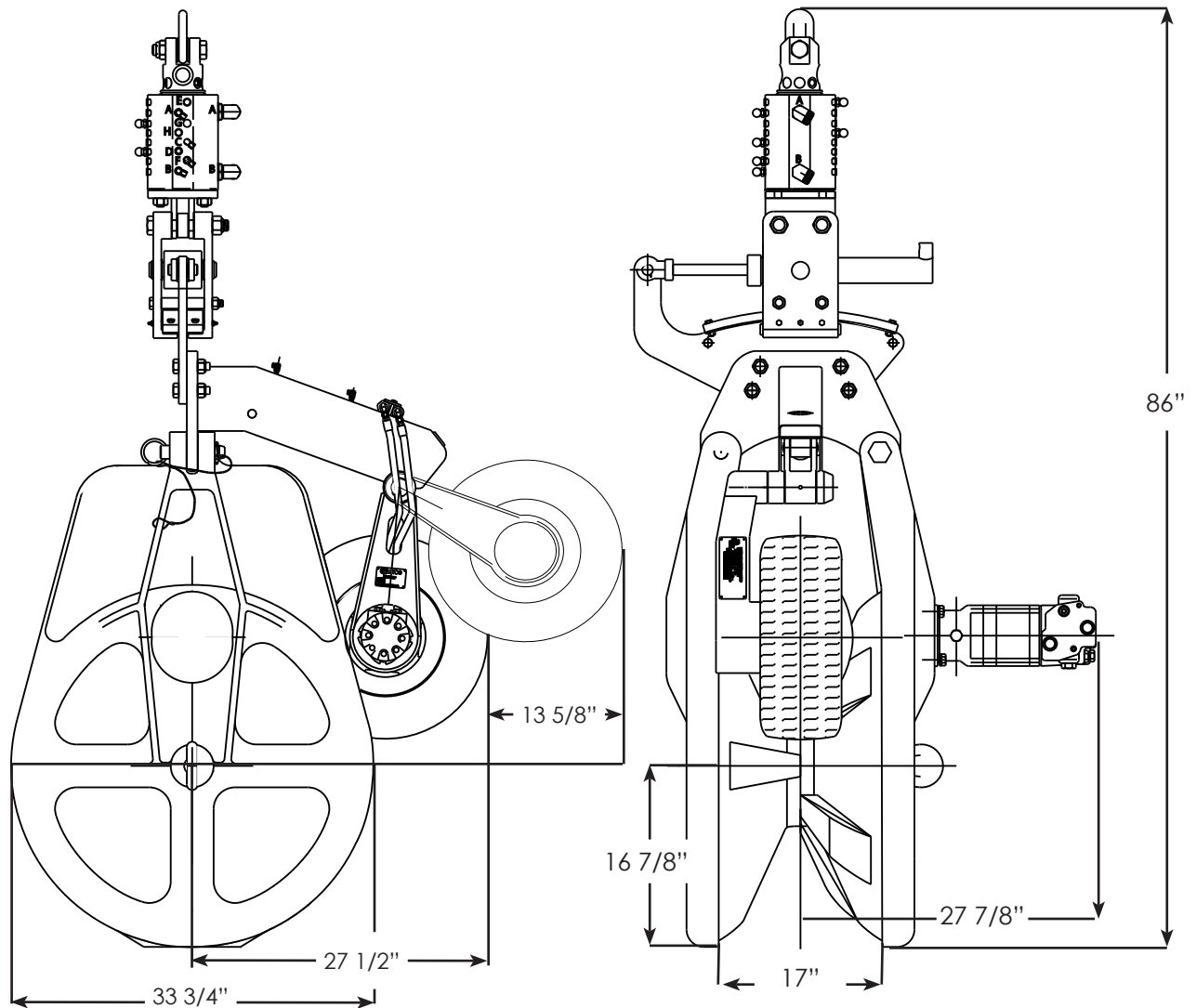
Optional Powertilt option moves the block from side to side for total control over the hauling of the net.

Bolt in Cleated Sheave:

4 different styles of cleats are available to customize your powerblock. Rubber, Aluminum, Low Profile Polyurethane or High Profile Polyurethane.



Model	Weight LBS	Height Inches
B32 W Plain	630	48
B32 W With Powergrip	815	56
B32 W With Powergrip and Swivel	925	73
B32 W With Powergrip, Swivel and Swivel Tilt	1017	86



Model	Sheave Speed		Net Pull Lbs @ 1/2 Radius	Hydraulic Oil Input	
	FPM	RPM		Flow GPM	Pressure PSI
B32W- 029 / 2 - B9932-SWL - PWRTLTL	191L / 376H	33L / 65H	7050 / 3340	32	2000
B32W- 040 / 2 - B9932-SWL - PWRTLTL	168L / 336H	29L / 58H	9500 / 4600	40	2000

***Maximum recommended continuous hydraulic flow is 45 GPM @ 2000 PSI**
Sheave capacity is 42 inches of compact net circumference

Smith Berger Marine, Inc.

7915 10th Ave. S., Seattle, WA 98108 USA

Tel. 206.764.4650 - Toll Free 888.726.1688 - Fax 206.764.4653

E-mail: sales@smithberger.com - Web: www.smithberger.com